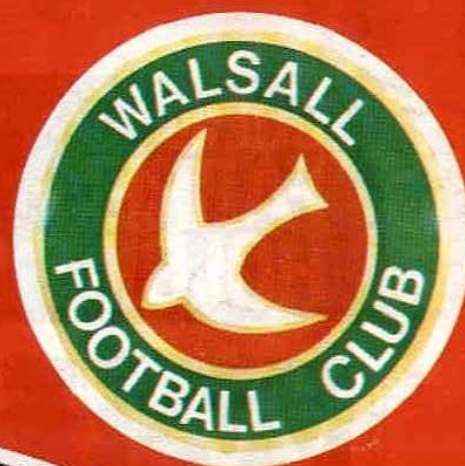


**Football League Division Three**

**SWINDON TOWN**



**WALSALL**

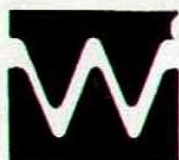


**Official Programme  
Volume 13 Issue 5**

**Saturday 9th September 1978  
Kick off 3pm PRICE 20p.**



# COLIN FARREN HOLDINGS LTD.



**Willenhall  
Pressure  
Diecasting Co. Ltd.**

PRESSURE DIECASTING  
IN ZINC BASED ALLOYS  
Tel: Walsall 27826

## FARREN, CASSELLS, & WESTLEY LTD.

Manufacturers of  
silver plated giftware

Tel: Dudley 213192



## **Z** ZOAR DIE TOOLS (DUDLEY) LTD.

Die and Mould Manufacturers

Tel: Dudley 56476

## **IKON** ENGINEERING CO. LTD.

General Machinists,  
Gravity Dies,  
Welding.

Tel: Dudley 57729

HEAD OFFICES: ZOAR HOUSE,  
MUSK LANE TRADING ESTATE,  
LOWER GORNAL, DUDLEY, WEST MIDLANDS.

# WALSALL FOOTBALL CLUB LTD.

FELLOWS PARK

WALSALL

Club Office  
Tel: 22791



Ticket Office  
Tel: 30696

### Directors

K. E. Wheldon (*Chairman*)  
J. A. Harris  
R. Homden  
S. E. Boler  
B. E. Bradnack

### Secretary

H. J. Westmancoat

### Manager

Alan Ashman

### Medical Officer

Dr. R. L. McKechnie

Chief Coach Ken Oliver

### Chief Scout

Ron Jukes

### Groundsman

Roger Johnson

### Editor & Photographs

W. Pepper

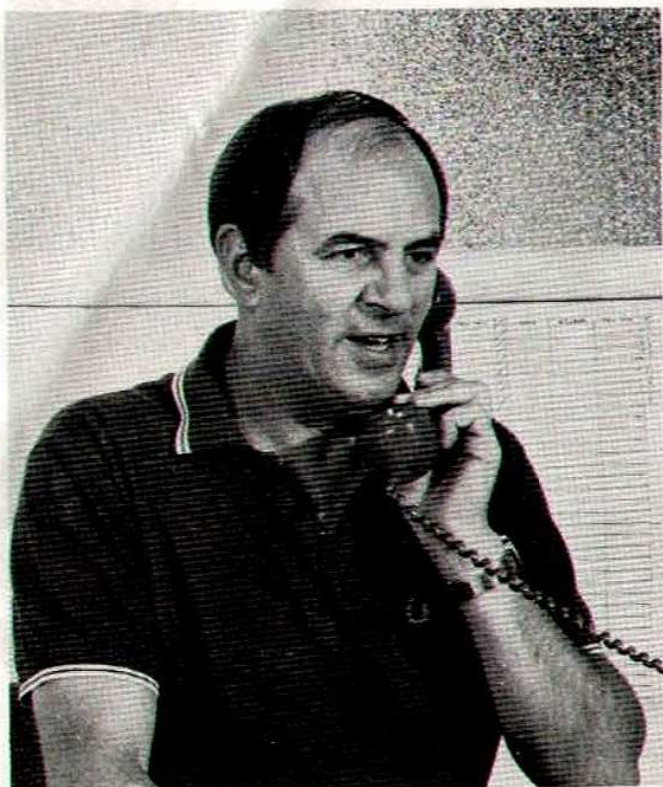
The Editor is grateful for the assistance given  
by

Trevor Gedge  
Paul Marston  
David Whinyates

Express & Star  
Evening Mail  
Walsall Observer

in compiling this programme





# THE ALAN ASHMAN REPORT

What a week that was! All the enquiries, telephone calls and "home work" began to bear fruit as the new players we need to strengthen the squad started to arrive at Fellows Park.

I had always said we needed a minimum of FIVE men to complete the first team squad, but you have to choose carefully before you buy. Things really started to happen on Tuesday when we signed two players in a few hours, and that was only the start as we set about making Walsall a force in the Third Division.

Our first buy was Steve Waddington, a busy and aggressive midfield man or winger from Stoke City. He has had considerable first team experience with Stoke, and I am sure he will be an asset to the club.

Next came Roy McDonough, a tall young striker from Birmingham City, and I must say it is unusual to snap up two players that you want in one hectic day.

## LOCAL PLAYERS

You never know how things are going to turn out and these deals do not always proceed as smoothly as you hope. Many snags can crop up between the time you make the first approach and getting the signature on the transfer forms.

It does not follow that you should always seek to buy local players, but on the other hand it is a distinct advantage if you can cut out travelling and

avoid people having to live in hotels for a time. It is important for players to attend training sessions quickly and regularly.

When we have gathered the staff we want, Ken Oliver, the Chief Coach, and I will be in a position to ensure a higher level of fitness all round. Then I am certain this club will be in a position to make an impact.

As soon as the dust has settled, I want Ken to start writing his own column in the programme, telling supporters what is happening behind the scenes.

## YOUTH POLICY

Next week our young players will be involved in their first F.A. Youth Cup tie here at Fellows Park, and with that in mind we held a trial match at Rushall last week. I am very grateful to Rushall Olympic F.C. for allowing us to use their ground and facilities for that game.

It is very necessary for Walsall to be developing good young players in the background, but it is no good telling the fans that you are going to have a great youth policy which will pay dividends in the future. Quite rightly they want to know what is happening in the first team NOW. You will have seen from the operations of the past few days that everyone at Fellows Park is getting on with the job.



## TOP OF THE LEAGUE



# WALSALL METAL CO.

FOR SCRAP METAL PRICES  
SEVEN DAYS SERVICE

WE WILL QUOTE YOU FOR ALL  
— NON-FERROUS METALS —  
COPPER — BRASS — GUNMETAL — LEAD  
PHOSPHOR BRONZE — ALUMINIUM  
TIN — BATTERIES — MERCURY — NICKEL ETC.

MONDAY TO FRIDAY	8.30am TO 6.00pm
SATURDAY	8.30am TO 4.00pm
SUNDAY	10.00am TO 12.30pm

THE DITCH, OFF ABLEWELL STREET, WALSALL. TELEPHONE: 28293

# keep in touch

## Walsall Observer





# WELCOME TO SWINDON TOWN



*Back Row:* John McLaughlin, Chris Kamara, Steve Aizlewood, Colin Prophet, Jimmy Allan, Roy Carter, Kevin Roberts, Russel Lewis, Andy Ford, Chic Bates, Chris Guthrie.  
*Front Row:* David Cunningham, Kenny Stroud, Brian Hughes, Bobby Smith (Manager), Ian Miller, Ray McHale (Captain), Gus Gilligan.

## **STEVE AIZLEWOOD – DEFENDER**

Made 71 League appearances for Swindon to the end of last season and is a former Welsh under 23 International.

## **JIMMY ALLAN – GOALKEEPER**

Had made 158 League appearances at the end of last season.

## **PHIL BATES – FORWARD**

Signed for Swindon in January 1978, made 11 appearances for Swindon last season.

## **ROY CARTER – MIDFIELD**

Signed for Swindon in December 1977 having made 64 League appearances for Hereford and had made 18 more for Swindon by the seasons end.

## **DAVID CUNNINGHAM – FORWARD**

He moved to Swindon in the 1977 Close season and made 16 League appearances last season.

## **ANDY FORD – FORWARD**

He made 33 appearances last season mostly at left back where he has taken over from the long serving John Trollope.

## **GUS GILLIGAN – FORWARD**

Played twice in the League team last season.

## **CHRIS GUTHRIE – FORWARD**

Made 38 appearances for Swindon last season and plays a traditional Centre-Forward role.

## **CHRIS KAMARA – MIDFIELD**

Made 40 appearances for Swindon last season.

## **RUSSEL LEWIS – DEFENDER**

A young player who had made 6 League appearances to the end of last season in central defensive roles.

## **RAY McHALE – MIDFIELD**

Made 81 League appearances for Swindon to the end of last season and usually plays as the link man in mid-field although he likes to get forward and has a hard shot that made him the regular penalty taker last term.

## **JOHN McLAUGHLIN – DEFENDER**

Made 177 League appearances for Swindon to the end of last season, mostly at right back, but he also had quite a lot of experience in midfield.

## **COLIN PROPHETT – DEFENDER**

Has played 154 games for Swindon and has been Club Captain for the last two seasons and a fixture at centre back during that time.

## **KENNY STROUD – MIDFIELD**

Ken has made a 154 League appearances to the end of last season mostly in midfield.

## **JOHN TROLLOPE – DEFENDER**

Made 737 League appearances to the end of last season nearly all at left back. Last season he passed the old record for one club domestic appearances in this country, retired from the first team to take up the job of Youth Manager was voted player of the year by the readers of the local newspaper and was awarded the MBE. He remains in training as cover and could still beat Jimmy Dickenson's League appearance record for a single club player.

## **BRIAN WILLIAMS – MIDFIELD**

He made 22 First division appearances for Q.P.R. last season before signing for Swindon in June 1978.

## **IAN MILLER – FORWARD**

Signed from Doncaster Rovers during close season.



# J. HODSON & SONS

IRON AND STEEL MERCHANTS  
SKIP CONTAINER HIRE  
SCRAP AND FACTORY CLEARANCE

BUYERS OF RE-USABLE  
PLANT AND MACHINERY

**BLOXWICH ROAD,  
WALSALL**

**J. Hodson (Plants & Machinery Sales) Ltd.**  
**Bloxwich Road, Walsall**  
**Tel: 79490 & 614103**

## WELCOME TO NEW FACES



**KEN OLIVER**

Has joined Walsall as Chief Coach. He was previously at Birmingham City as coach and before that with Newcastle United.



**STEVE WADDINGTON**

22 years Winger from Stoke City. Son of former Stoke Manager, Tony Waddington. Has made several first team appearances for Stoke City.



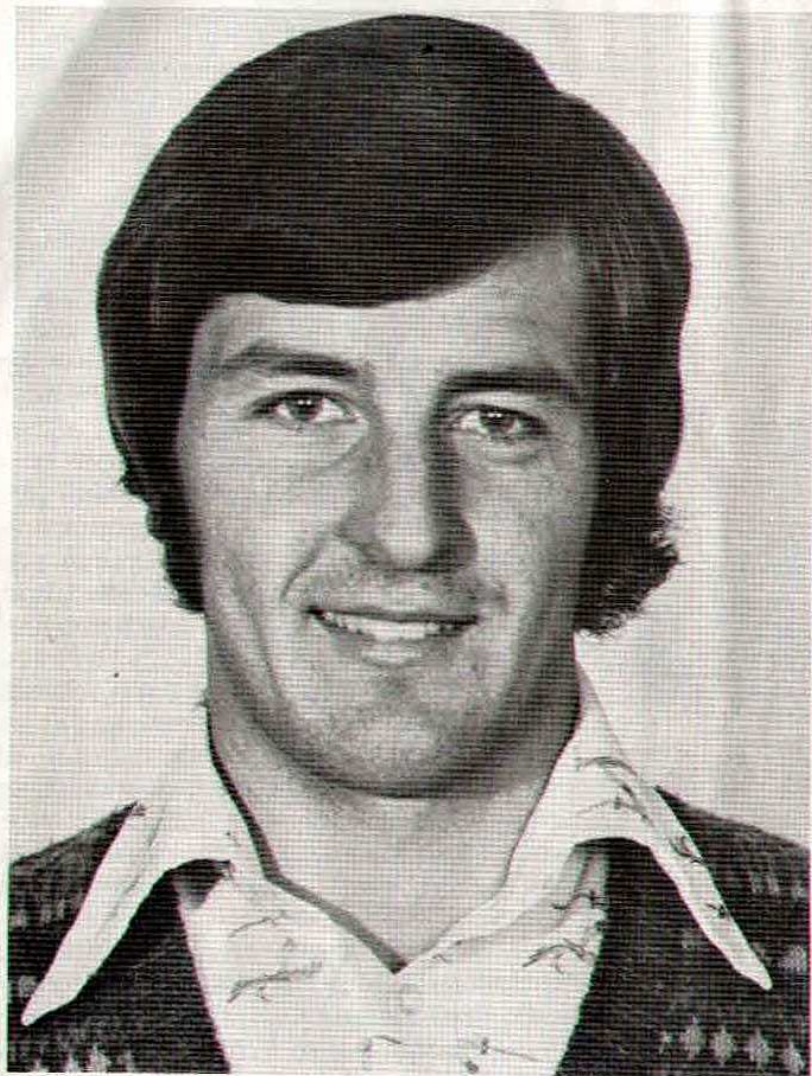
**ROY McDONOUGH**

19 years. 6'1" a Birmingham born Striker from Birmingham City. He has made several first team appearances for the Blues.



# **PLAYERS PIC N° 5**

## **KELVIN CLARKE**



**WALSALL  
PRESSINGS**

COMPANY LIMITED

**FOR  
PRESSINGS AND  
FABRICATIONS**



**WEDNESBURY ROAD  
WALSALL WS1 4JW**

Telephone: Walsall 25252/4

**AUTOGRAPH**



## BUTLER FOUNDRIES GROUP

Coppice Side Industrial Estate,  
Brownhills,  
Walsall WS8 7HD,  
England.

EXPANDING COMPANIES WITH  
VACANCIES FOR THE RIGHT PERSONNEL

- ALUMINIUM ALLOY CASTINGS
- GREY IRON CASTINGS
- POWER PRESS AUTOMATION
- MACHINING, TOOLMAKING,  
PATTERN & DIE MAKING



Telephone: Brownhills (05433) 2455 Telex 339933

## Quo-Vadis

FREER STREET, WALSALL  
Telephone: 34458



Morning Coffee, Lunch, Tea and Evening Meals with  
soft music included to make you feel at home.

Open daily from 9.30 a.m. until  
10.00 p.m. except Sundays.



## Ricky's

109/110 Lichfield Street,  
Walsall, Staffs.

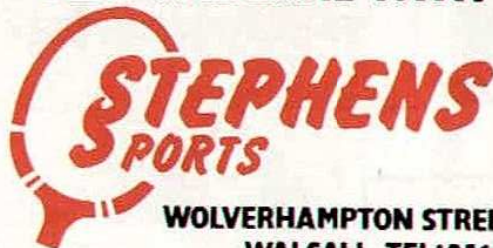
Telephone: Walsall (0902) 35699

We welcome you to dine with us in the  
intimate atmosphere of our English and  
Continental Cuisines.

Monday-Friday 12.00 a.m. until 2.30 p.m.  
Evening 6.30 p.m. Last orders 10.30 p.m.  
Saturday Evening 6.30 p.m.-11.00 p.m.

FRIENDLY RESTAURANTS OF UNIQUE QUALITY  
TWO ESTABLISHMENTS UNDER ONE DIRECTOR  
RICKY'S RESTAURANTS LTD.

## PLAY THE GAME WITH



WOLVERHAMPTON STREET  
WALSALL TEL: 25651

## WALSALL'S NEWEST & LARGEST SPORTS STORE

(A DIVISION OF WALSALL LEATHER CO. LTD)

## GUEST SPOT

Introducing this week's  
guest, **Gary Shelton**,  
who joined Walsall as a  
schoolboy player and is  
now hitting the head-  
lines with First Division  
Aston Villa.

"Contact the club secretary right away . . .  
Aston Villa are interested in signing you." That  
was the message I received one Sunday evening  
a few short months ago, and it was the turning  
point in my career.

I was astounded. It was a real bolt from the  
blue, and it started the most thrilling episode  
of my career so far.

I went to see Ron Saunders at Villa Park  
and after talking to him signed for a fee of  
£60,000. After I have played 15 games for  
Villa there will be another £20,000 for Walsall,  
and if I play 50 matches the Saddlers collect  
a further £20,000.

Looking back, I can remember going into  
the Villa Park dressing room for the first time  
and feeling overawed by such big name players  
as Andy Gray, John Gidman and Brian Little,  
not to mention all the rest of the lads in a line-  
up worth over £1,000,000.

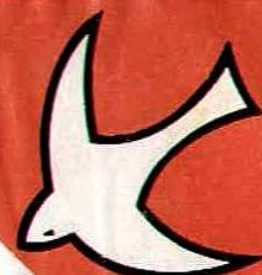
I sat on the sub's bench five times without  
going on, and that was a nerve-wracking experi-  
ence. Then during the pre-season tour of  
Yugoslavia, I played in two games and scored  
a couple of goals. That boosted my confidence,  
and when I saw my name on the team sheet to  
play in the first match, against Wolves, I was  
over the moon.

I have since scored my first goal for the club  
against Spurs at White Hart Lane, then another  
in the Football League Cup win over Sheffield  
Wednesday, but I realise I am still fighting for  
my place.

Now I am anxious to play the necessary  
number of matches to bring in that extra  
£40,000 for Walsall which will be my "thank  
you" to a club which believed in me and gave  
me my chance.

Football has always been my life since I  
played for a junior school team in my home  
city of Nottingham, and eventually I gained





honours with the Nottingham Schoolboys side. My link with the Saddlers began when I joined Parkhead United, a nursery club for Walsall, and I remember playing my first match at Fellows Park in a trial against Walsall Pegasus when I was 15.

I then met Ron Jukes, Walsall's Chief Scout, and signed schoolboy forms. Later I was invited to play in another trial, scored twice, and on leaving school I joined the Saddlers as an apprentice.

But I was soon brought down to earth because much of my time was taken up on jobs such as cleaning the ground, polishing boots and preparing kit.

When Doug Fraser was manager I was included in the first team squad to play Bristol Rovers, but lost my place and was told that I tended to "freeze" in front of the fans. I had got to conquer my nerves and go out and play.

I made up my mind to keep fighting at all costs, and everything began to change for me when Dave Mackay and Des Anderson came to Fellows Park. I was still in and out of the team, but I felt I was improving all the time and in that season made eleven appearances in the last 15 matches.

# JOHN HENRY



Hardware - D.I.Y.

35-36 BUTTS ROAD  
WALSALL

Phone: Walsall 23177 (2 lines)

**\*QUALITY**

**MOKES & CO. LTD**

**THE KEYWAY TO PRECISION COMPONENTS**

**\*QUANTITY**

**ROLLINGMILL ST, WALSALL**

## DID YOU KNOW?

You don't require a Baby-sitter when you dine at the

# LONGHORN

SUTTON ROAD

**We welcome children**

**Even at Holiday Times**

**Telephone: 22790**

**\* TOKEN \* No. 5**



GET A SMOOTH RIDE EVERY TIME!

# The Ideal Saddle Company Limited

MAKERS OF HIGH CLASS SADDLES

## Fieldgate, Walsall

Telephone: Walsall 20233

## INSITU ENGINEERING



6 MOUSE HILL  
PELSALL  
WALSALL  
WEST MIDLANDS  
TEL: PELSALL 682476

- SITE FABRICATION AND INSTALLATION
- WELDING AND DESIGN
- CIVIL ENGINEERING AND
- BUILDING WORK

## FACE IN THE CROWD



WALSALL

V

SHREWSBURY

2nd September 1978

If the person ringed in the photograph would like to call at the Wallows Lane office they will receive two free tickets for the next home match.

## YOUNG SUPPORTERS QUIZ

*For under fifteen year olds  
£2 Prize for first correct answer  
opened*

Question—To which clubs do the following grounds belong?

- 1 Millmoor                      2 Field Mill  
3 Boothferry Park

Prizewinners and Answers:  
Charlton programme,

David Foulkes — Pelsall

- A 1. Tranmere 2 Shrewsbury  
2. Swansea

Shrewsbury programme,  
Christian Ryder — Tunbridge Wells  
A All were apprentices at Walsall  
and are now professionals with  
the club.

Answers to: Young Supporters  
Quiz, Walsall Football Club,  
Fellows Park, Walsall

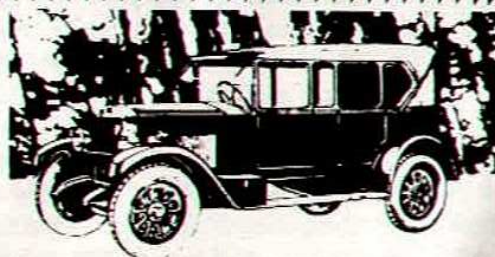
## J.E. ROWLAND & CO

ASSOCIATED INSURANCE BROKERS

### CAR INSURANCE

For entirely reliable Insurance advice  
contact Rowlands of Walsall for you  
and your car's sake.

5 BRIDGE STREET, WALSALL WS1 1DT TEL: WALSALL 25454/5







# YOUNG WALSALL



## PAUL WADDINGTON

Paul is 17 years old, born at Warley. He attended Oldbury Technical and Warley High School. Before becoming an apprentice with the club he played for his school team and the West Midland County team. He scored eight goals in last season's successful reserve team and plays as a winger.

### NOTICE

FIRST ROUND OF THE F.A. YOUTH CUP

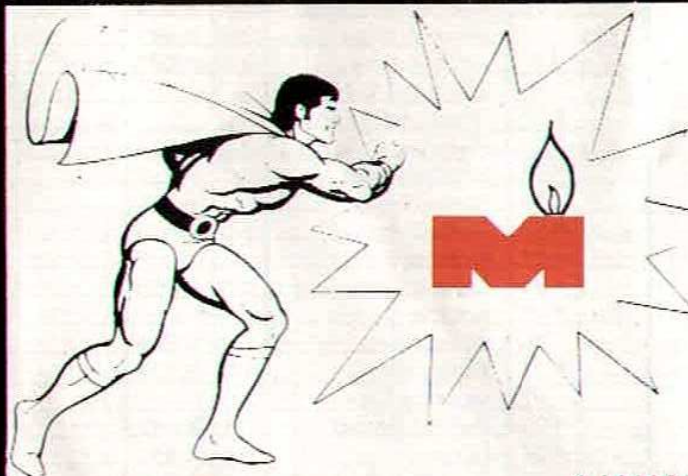
at Fellows Park

**Wednesday, 13th September 1978**

Kick off 7.30 p.m.

WALSALL v COALVILLE

**Come along and support the  
Youth Team**



- ★ COMBUSTION  
MAINTENANCE ENGINEERS
- ★ ELECTRICAL CONTRACTORS
- ★ ELECTRICAL RETAILERS

## **MASON STYLE ELECTRICS**

YOU ARE ALWAYS WELCOME AT  
OUR SHOWROOMS

4 HAWES CLOSE, WALSALL WS1 3HG

Telephone: 611825 and 611851



# WALSALL MATCHDAY FACTFINDER 1978-1979

## THIRD DIVISION

	Home			Goals			Away Goals			Pts		
	P	W	D	L	F	A	W	D	L	F	A	Pts
Swansea	4	2	0	0	5	0	1	1	0	4	2	7
Watford	4	1	0	1	6	3	2	0	0	7	4	6
Peterboro	3	2	0	0	3	0	1	0	0	2	1	6
Chester	4	2	0	0	5	1	1	0	1	1	3	6
Swindon	4	2	0	0	3	1	0	2	0	1	1	6
Shrewsbury	4	1	1	0	1	0	1	1	0	2	1	6
Hull City	3	1	1	0	4	1	1	0	0	3	1	5
Plymouth	3	1	0	0	2	1	1	0	1	4	3	4
Chesterfield	4	0	1	1	2	4	1	1	0	4	1	4
Rotherham	3	1	0	0	2	1	0	2	0	0	0	4
Southend	4	1	0	1	2	2	0	2	0	4	4	4
Carlisle	4	1	1	0	2	1	0	1	1	2	4	4
Blackpool	4	2	0	0	4	1	0	0	2	2	7	4
Gillingham	4	0	1	1	2	3	0	2	0	3	3	3
Colchester	4	0	2	0	2	2	0	1	1	0	1	3
Mansfield	4	0	2	0	2	2	0	1	1	0	1	3
Sheff. Wed.	3	0	1	0	0	0	1	0	1	2	3	3
Brentford	4	1	0	1	1	3	0	1	1	2	3	3
Bury	4	0	2	0	5	5	0	0	2	1	4	2
Exeter	3	0	2	0	2	2	0	0	1	0	3	2
Lincoln	4	1	0	1	3	3	0	0	2	1	5	2
WALSALL	4	0	1	1	3	5	0	0	2	1	3	1
Tranmere	4	0	1	1	2	4	0	0	2	1	3	1
Oxford U.	4	0	0	2	0	3	0	1	1	1	2	1

## LEAGUE DIVISION THREE APPEARANCES AND GOAL RECORD 1978/79 SEASON

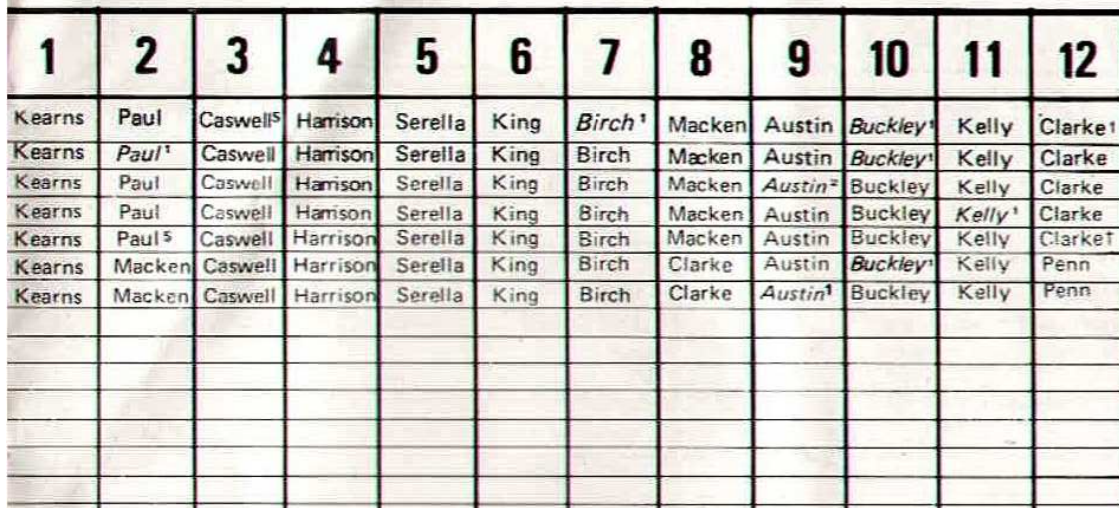
	Appearances	Goals	
		League	Cup
Terry Austin	7	3	—
Alan Buckley	7	1	2
Alan Birch	7	—	1
Brian Caswell	7	—	—
Kelvin Clarke	3	—	—
Steve Cousins	—	—	—
Ron Green	—	—	—
Colin Harrison	7	—	—
Mick Kearns	7	—	—
Jeff King	7	—	—
Jim Kelly	7	1	—
Tony Macken	7	—	—
Ian Paul	5	—	1
Don Penn	—	—	—
Dave Serella	7	—	—
Gary Tranger	—	—	—

DATE	OPPONENTS	Last Season		This Season	F-A
		F-A	Att	Att	
Aug* 12	Halifax Town LCI	—	—	4,589	2-1
15	Halifax Town	—	—	2,276	2-0
* 19	Watford	—	—	6,423	2-4
23	Chester	1-1	4,950	4,257	1-2
26	Carlisle United	0-2	10,325	4,781	0-1
* 30	Charlton Ath. L.C.2	—	—	4,519	1-2
Sept* 2	Shrewsbury Town	3-0	8,341	4,269	1-1
* 9	Swindon Town	2-0	4,717	—	—
12	Hull City	—	—	—	—
16	Blackpool	—	—	—	—
* 23	Colchester United	4-2	4,231	—	—
* 26	Peterborough Utd.	1-0	5,408	—	—
29	Lincoln City	2-2	3,723	—	—
Oct. 4	L.C.3	—	—	—	—
* 7	Southend United	—	—	—	—
14	Mansfield Town	—	—	—	—
17	Bury	1-0	3,695	—	—
* 21	Plymouth Argyle	1-0	6,722	—	—
28	Sheffield Wed.	0-0	10,634	—	—
Nov* 4	Rotherham United	0-0	4,364	—	—
8	L.C.4	—	—	—	—
10	Shrewsbury Town	0-0	4,635	—	—
* 18	Carlisle United	0-0	5,907	—	—
25	F.A. Cup 1	—	—	—	—
Dec. 2	Brentford	—	—	—	—
* 9	Tranmere Rovers	0-0	6,072	—	—
13	L.C.5	—	—	—	—
16	F.A. Cup 2	—	—	—	—
* 23	Gillingham	2-1	4,707	—	—
26	Exeter City	1-1	5,149	—	—
30	Oxford United	1-3	4,610	—	—
Jan* 1	Swansea	—	—	—	—
* 6	Hull	—	—	—	—
13	Swindon Town	3-2	4,135	—	—
* 20	Blackpool	—	—	—	—
26	Colchester United	1-1	6,039	—	—
Feb. 3	Peterborough Utd.	0-0	5,389	—	—
* 10	Lincoln City	3-1	5,082	—	—
17	Southend United	—	—	—	—
* 24	Mansfield Town	—	—	—	—
Mar. 3	Plymouth Argyle	3-3	5,958	—	—
* 10	Sheffield Wed.	1-1	5,232	—	—
17	Rother'm Utd. (LCF)	0-3	4,848	—	—
* 24	Chester	3-0	4,990	—	—
27	Watford	—	—	—	—
31	Chesterfield	1-0	4,856	—	—
Apr.* 7	Brentford	—	—	—	—
10	Gillingham	1-3	5,243	—	—
* 14	Exeter City	1-3	5,174	—	—
17	Swansea City	—	—	—	—
* 21	Oxford United	2-1	4,453	—	—
* 24	Bury	1-2	4,611	—	—
27	Tranmere Rovers	1-0	4,848	—	—
May* 5	Chesterfield	2-2	7,426	—	—
12	F.A. Cup Final	—	—	—	—

\* Denotes home match

Scoring player name in *italics* with number of goals



[illegible]

† Denotes substitute played      s Denotes substituted





R W McClaughlin  
Tubefabs Limited  
Hatherton Street  
Walsall Staffs  
Walsall 25133

Welding & Pipework  
Engineers to the Petroleum,  
Chemical & Power Industries,  
and  
Specialised Heat Treatment

## **WALSALL F.C. AWAY TRAVEL SERVICE**

**WALSALL F.C. Registered Members Club**

**BLACKPOOL v WALSALL, Saturday, 16th September 1978**

Coaches leave Fellows Park at 11 a.m.  
Fare £2.45 or £3.00 including tour of illuminations  
Leave Blackpool 11 p.m. for return journey.

Members wives and families are invited and can spend the afternoon in Blackpool if they wish

**Booking Offices open today** at the Club Shop inside Hillary Street entrance, and after the match at the Ticket Office in Wallows Lane. Bookings can also be made in the week at the Club Offices in Wallows Lane or at any of Fentral Coachways booking offices.

### **How to become a Registered Member**

Write your name address and date of birth on a postcard and place in an envelope with two passport type photographs and a postal order for 30p to cover administration costs to:—

Walsall F.C. Travel Service, Walsall Football Club, Fellows Park, Walsall

When your application has been processed you will be informed when and where to collect your registration card.

**Please Note:** Even if you do not travel to away matches you can still be a Registered Member and join in the other activities at the club. We have just held our first 'Meet the Players Evening' in the Vice-Presidents Club, which was very successful. Members met and talked with Terry Austin and Mick Kearns, other similar meetings will be arranged in the near future. If you are a genuine supporter of Walsall Football Club become a registered member, and join in the social side of the club.

**WALSALL v COALVILLE 1st Round F.A. Youth Cup — Kick off 7.30 p.m.**

Registered Members are invited to the Vice-Presidents Club after the game.



# NOTICE BOARD

## WHAT'S YOUR OPINION ?

### Letters to the Editor

The best selection of letters received will be published from time to time, and cash prizes awarded. If you have any comment or point of view you consider of interest to the club or to supporters write in to—

The Programme Editor  
Walsall Football Club  
Fellows Park, Walsall

### Having a Party?

the ideal venue with  
'that little bit of class'

### WALSALL VICE-PRESIDENTS CLUB

For full details of hire, and  
facilities available

Contact W. Pepper Telephone 22791

Copies of Photographs appearing in  
the Walsall Football Club Programme  
may be purchased from the Club

Size 7" x 5" 65p each

Apply in writing and enclose postal  
order.

# HALF-TIME SCOREBOARD

<b>A</b>	BRENTFORD v HULL	
<b>B</b>	CHESTERFIELD v EXETER	
<b>C</b>	OXFORD v BURY	
<b>D</b>	PLYMOUTH v MANSFIELD	
<b>E</b>	ROTHERHAM v LINCOLN	
<b>F</b>	SHEFFIELD WED. v SOUTHEND	
<b>G</b>	SHREWSBURY v BLACKPOOL	
<b>H</b>	TRANMERE v GILLINGHAM	
<b>J</b>	WATFORD v SWANSEA	
<b>K</b>	BIRMINGHAM v LIVERPOOL	
<b>L</b>	W.B.A. v NORWICH	
<b>M</b>	SOUTHAMPTON v WOLVES	
<b>N</b>	IPSWICH v A. VILLA	
<b>P</b>	NOTTS. FOREST v ARSENAL	
<b>Q</b>	BOLTON v DERBY	
<b>R</b>	ORIENT v STOKE	
<b>S</b>	COVENTRY v CHELSEA	





# THE TEAMS

## WALSALL

Red Shirts with white collar,  
White Shorts with red and  
green stripe. Green stockings  
with red top and white band.

MICK KEARNS  
TONY MACKEN  
BRIAN CASWELL  
COLIN HARRISON  
DAVE SERELLA  
KELVIN CLARKE  
ALAN BIRCH  
JEFF KING  
TERRY AUSTIN  
ALAN BUCKLEY  
JIMMY KELLY

1 CHRIS OGDEN  
2 JOHN McCLOUGHLAN  
3 ANDY FORD  
4 ROY CARTER  
5 STEVE AIZLEWOOD  
6 KENNY STROUD  
7 IAN MILLER  
8 RAY McHALE  
9 CHRIS GUTHRIE  
10 CHICK BATES  
11 BRYAN WILLIAMS  
12

## SWINDON TOWN

Red Shirts, White Shorts. Red  
Stockings. / Change colours All  
Blue

# OFFICIALS

### Referee

Mr. D. OWEN. Joined the Football League in 1972 having gained promotion through the Northern Premier, Cheshire County, West Cheshire and Chester Leagues. Refereed the Northern Premier League Challenge Shield in 1976/77.

Keen on most sports with emphasis on physical fitness and takes a keen interest in local Referees Society and is a member of the Management Committee of the West Cheshire League. Has one son and one daughter and is an inspector with a leading Insurance Company. His wife and family play an active part in many sports.

### Linesmen:

K. Cooper, Red Flag

D. Wragg, Yellow Flag